



National Weather Service Tallahassee, Florida



In this packet:

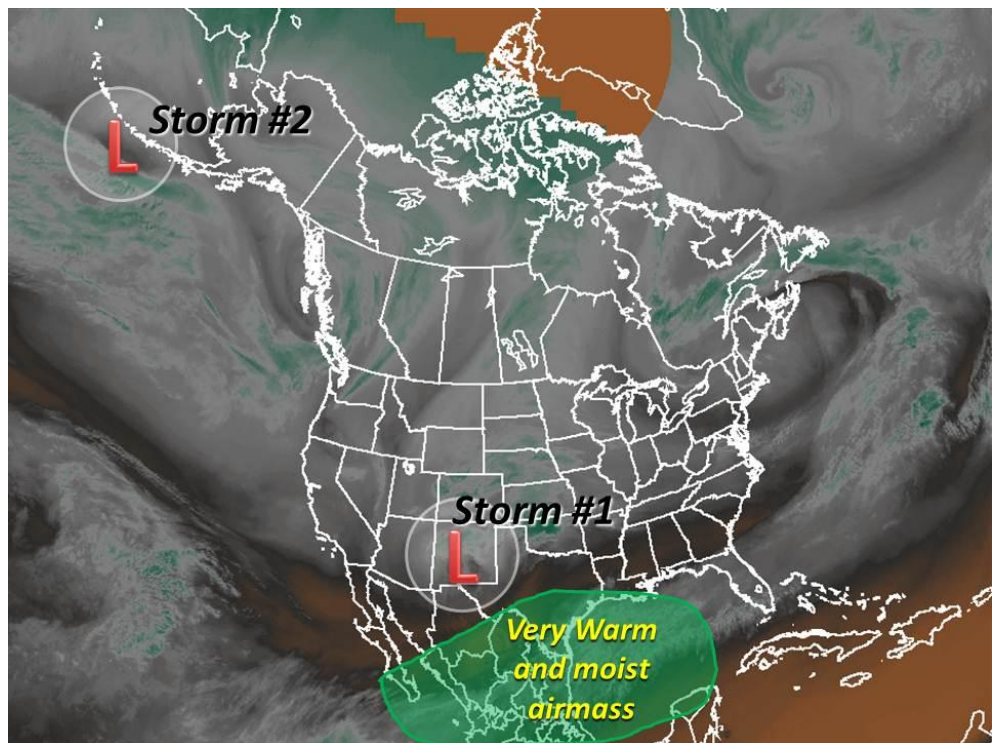
- Flash flooding possible Friday & Saturday
- River flooding possible this weekend and into next week
- *Slight Risk* of severe storms Friday

Overview

An active weather pattern was developing across the Gulf Coast, with a series of storm systems forecast to move across the southeastern U.S.

The first storm was taking shape over the Southern Plains, and will impact the region Friday and Saturday. The second system was southwest of Alaska, and will reach the Deep South early next week.

While there may be a slight risk of severe storms with each of these storm systems, the *primary threat* appears to be the potential for very heavy rainfall, and subsequent Flash Flooding and river flooding, as each of these systems taps a very warm and moist airmass over the Gulf of Mexico.

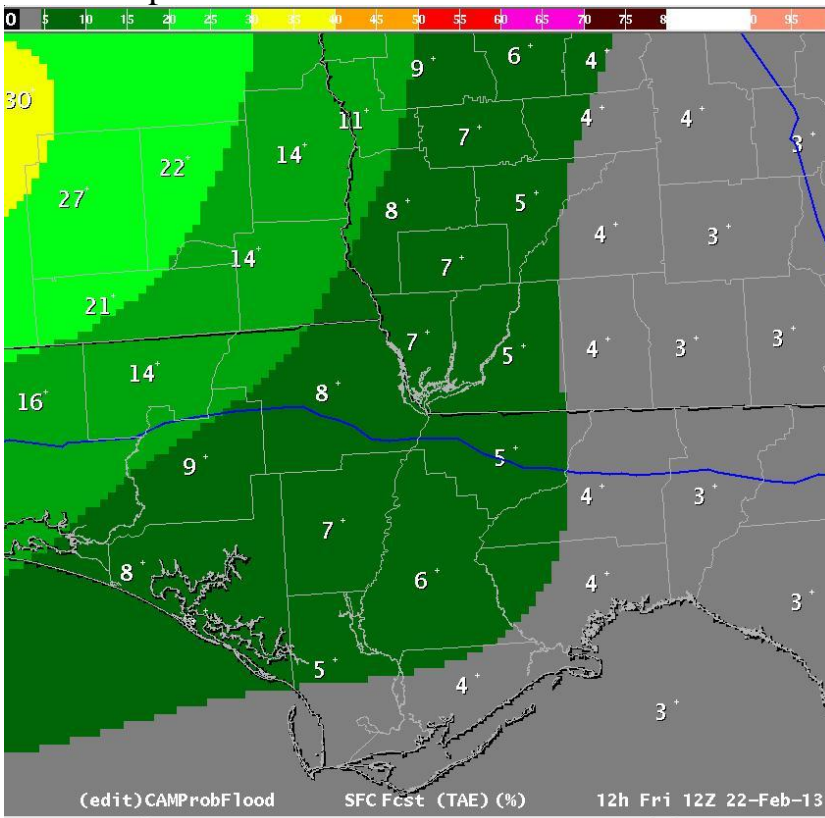


Timing



The greatest threat for flash flooding appears to be in Southeast Alabama and Southwest Georgia, but there is also some risk for the Florida Panhandle as well, especially as (if) the heavy rain bands shifts slowly southward Friday night and Saturday. The image below shows the probability of flash flooding within 25 miles of a point Friday afternoon. While these numbers may seem low, values above 15% are actually quite high for this sort of rare event.

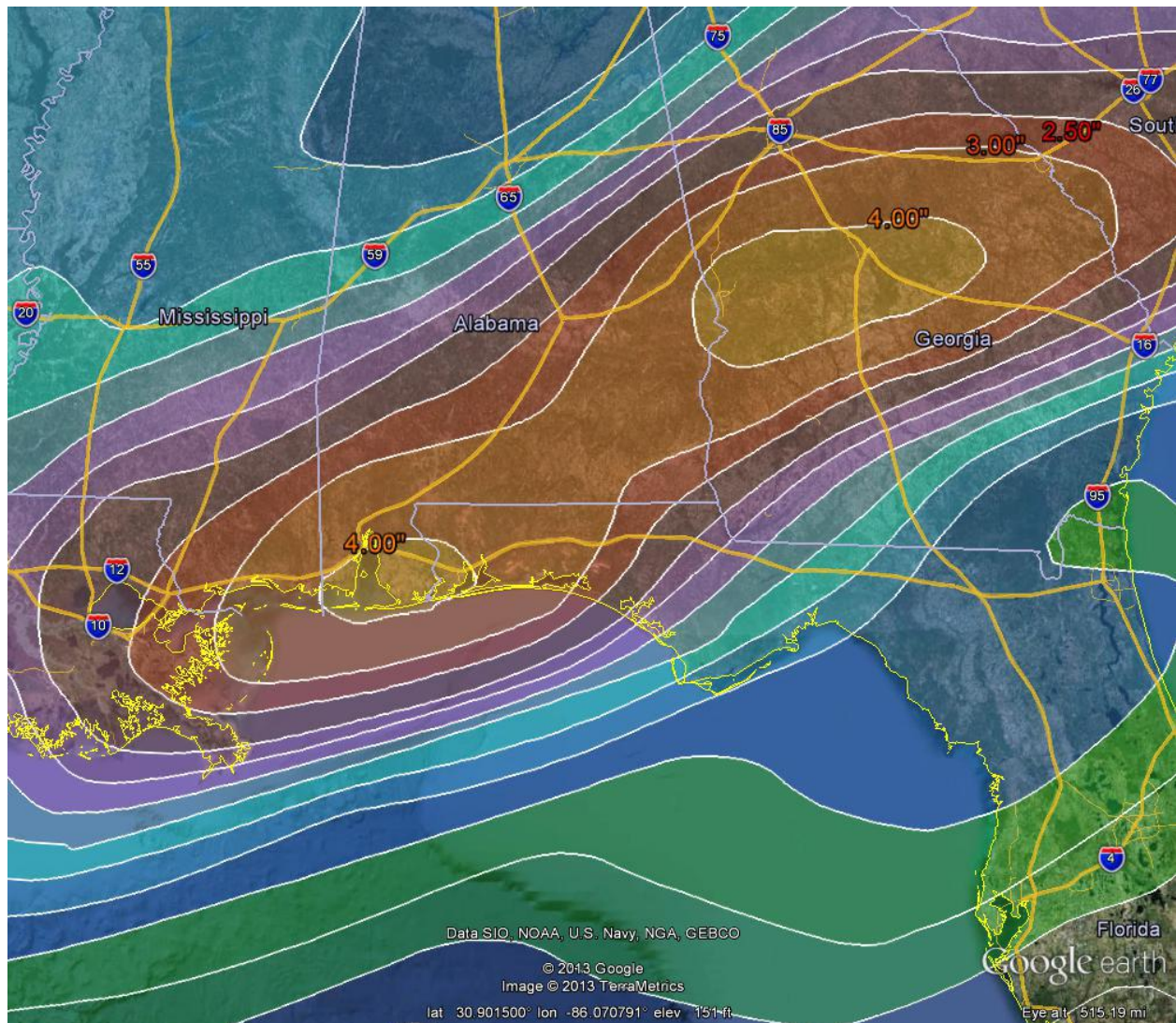
The timing will likely be from Friday afternoon through Saturday morning. The threat of river flooding will increase through the weekend and last through next week, as heavy rain from swollen upstream rivers flows downstream.



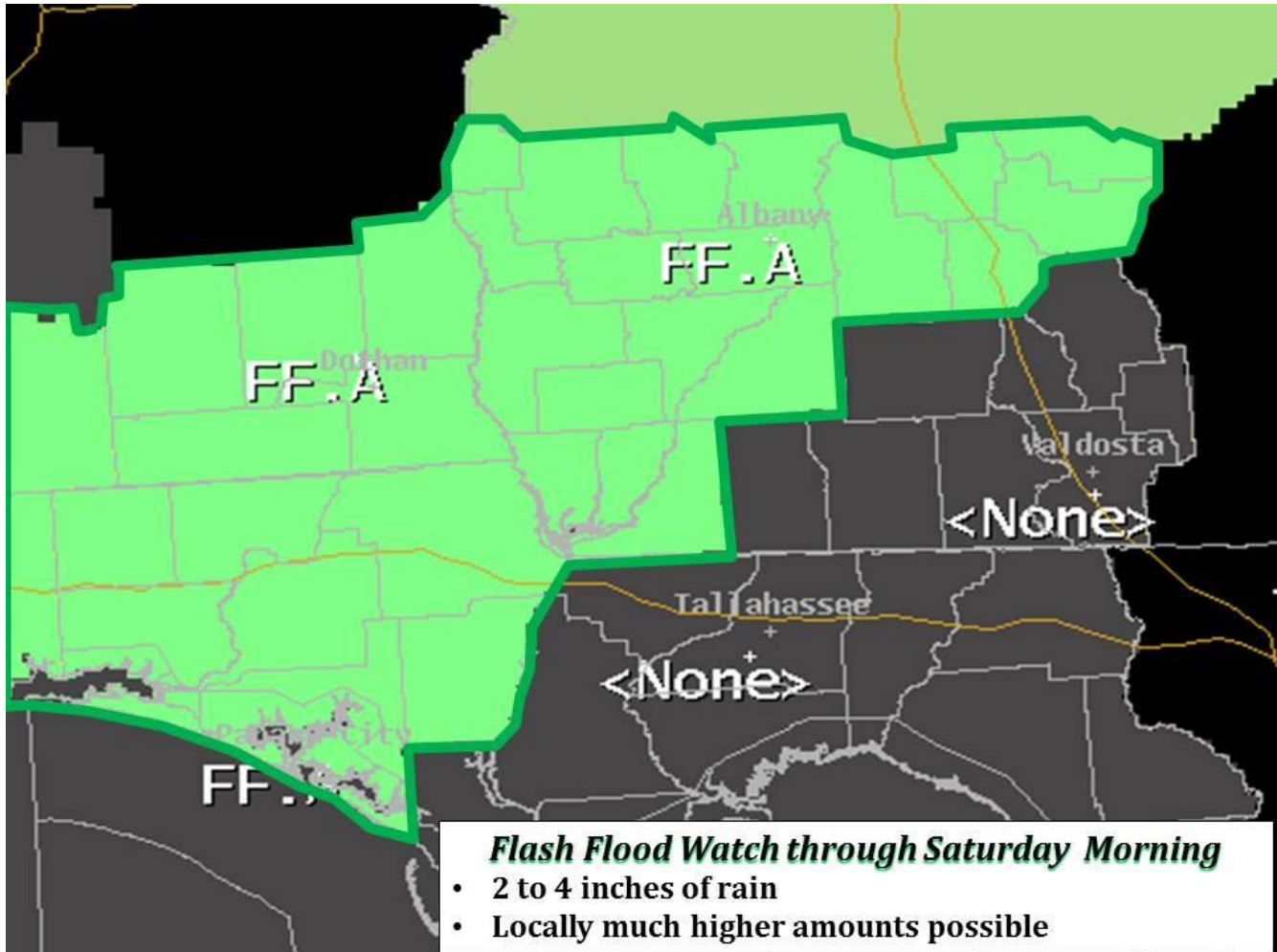
Impacts

Heavy Rain and Flooding:

The graphic shows where the heaviest rain is expected to fall through Saturday morning. These are the **average** amounts expected across the area, with a large area of 2 to 4 inches stretching from the Florida Panhandle, across Southeast Alabama, and into Southwest Georgia. Much heavier amounts may occur in smaller areas. In fact, some of our guidance suggests values of 2 to 3 times these amounts. This may lead to flash flooding, especially in areas that had heavy rain the previous week, and in low-lying areas with poor drainage.



With these expected heavy rain amounts, a *Flash Flood Watch* has been issued for the area highlighted in green below. This watch is in effect from Friday afternoon through Saturday morning.



Beyond this initial storm system, another storm is expected to impact the region on Monday, with the potential for additional heavy rainfall. The combination of these two events is likely to cause significant rises in several rivers.

The following information is taken from Wednesday's *Hydrologic Outlook*, issued by the National Weather Service in Tallahassee:

IMPACTS ON RIVERS...

SHOULD THESE ANTICIPATED RAINFALL AMOUNTS OCCUR...SIGNIFICANT RISES ON AREA RIVERS AND STREAMS WOULD BE LIKELY. CURRENTLY...THE FOLLOWING BASINS ARE WELL ABOVE BASE FLOWS AND VULNERABLE TO FLOODING...

CHOCTAWHATCHEE...INCREASED FLOODING POTENTIAL BETWEEN GENEVA AND BRUCE INTO NEXT WEEK.

CHIPOLA...INCREASED FLOODING POTENTIAL AT MARIANNA AND ALTHA INTO NEXT WEEK.

APALACHICOLA...MINOR FLOODING POTENTIAL AT BLOUNTSTOWN CONTINUING INTO NEXT WEEK.

FLINT...MINOR FLOODING POTENTIAL AT ALBANY AND AN INCREASED FLOOD POTENTIAL FROM NEWTON TO LAKE SEMINOLE.

WITHLACHOOCHEE...MINOR FLOODING POTENTIAL AT VALDOSTA.

OTHER VULNERABLE STREAMS INCLUDE THE MUCKALEE CREEK AND KINCHAFOONEE NORTH OF ALBANY AS WELL AS THE SPRING CREEK IN MILLER COUNTY AND THE LITTLE RIVER NEAR HAHIRA.

AS WITH ANY HYDROLOGIC RIVER PREDICTION...RISES AND EVENTUAL CRESTS ARE LARGELY DEPENDENT ON WHERE RAINFALL OCCURS AND ENTERS THE BASIN. FOR THIS REASON...THIS OUTLOOK MAY BE UPDATED FREQUENTLY IN THE NEXT FEW DAYS.

FOR THE LATEST FLOOD AND RIVER INFORMATION...PLEASE GO TO WEATHER.GOV/TALLAHASSEE AND CLICK ON THE RIVERS AND LAKES LINK.

Severe Weather:

There is a *Slight Risk* of severe storms Friday afternoon and early evening, highlighted in yellow below. At this time, this appears to be the lowest of the threats mentioned in this briefing package.

- **Isolated damaging winds and/or a tornado will be possible**



Summary

- Heavy rain is expected Friday and Saturday, posing a risk for flash flooding
- Whether this heavy rain occurs in our area or just to our north, there will likely be significant rises in our local rivers this weekend and next week, as upstream heavy rain moves quickly downstream
- If there is an additional bout of heavy rain early next week, that would obviously increase the threat of flash flooding and river flooding even more
- There is a slight risk of severe storms Friday, but at this time that appears to be the lesser threat (compared to the overall flooding threat)

If you have any questions, please give our office a call at **850-942-8833** or on our **toll free line at 800-598-4562** and ask to speak to a meteorologist. We are available 24 hours a day, 7 days a week. You can also reach us on our **Southern Linc phone at 1*77*284**.